

SV-360

Contactless Validator

The ultimate validator for enhanced passenger experience

Based on its long experience and know-how, AMCO introduces its new generation of contactless validator for easy and secure fare collection management on bus, tramways and light rail.

This multi-functional tool combines aesthetic design, robustness and high performance in processing a variety of electronic fare media options including smart cards, printed or mobile QR codes, NFC. Finally it supports contactless bank cards.

Tailored to modern passenger needs, SV-360 features a 7" touch color display, attractive user interface, bright indication LED light bars and a 3W audio system to ensure instant transactions as well as enhance rider's experience.

Apart from secure and unhindered validation transactions, this device is the ultimate marketing tool through promotional videos and animations on the display. Its uniqueness lies in its ability to combine fare collection with mobile marketing by communicating to passengers retail offers and discounts from companies cooperating with the transport operator for each route.

Key Features

- **Elegant, Robust and high quality validator suitable for vehicle environment**
- **7" projected capacitive touch screen with user friendly Interface**
- **Power CPU for further expandability**
- **Fare media options like smart cards, printed or mobile QR codes**
- **Support for NFC**
- **Audio speaker for commuters with vision disabilities**
- **Multiple communication interfaces**
- **Operates as part of fare collection system or as stand-alone validator**
- **EMVCo Level 1 and EMVCo Level 2 certified solution for contactless bank card payments**



SV-360
Contactless Validator
TICKETING SOLUTIONS

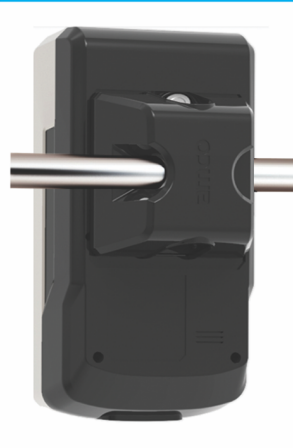
amco

Inspired
Technologies



Vertical installation

Horizontal installation



SV-360 SERIES CONTACTLESS VALIDATOR

Technical data are subject to change without any prior notice | SV_360_version 5.0_June 2023

TECHNICAL SPECIFICATIONS

Processing Unit	<ul style="list-style-type: none"> • CPU: 2x Arm Cortex A9 1.0 GHz (Optional: 4x Arm Cortex A53 1.26 GHz) • RAM: DDR3 512MB (Optional up to DDR4 2GB) • STORAGE: Integrated Flash - 4GB (Optional 32GB) / microSD - Up to 32GB • Linux, Android
User Interface	<ul style="list-style-type: none"> • Color TFT 7", resolution 480 x 800, protected by 4mm vandal-proof glass • Projected Capacitive Touch (PCAP) • Illuminated LED Bars as transaction indicators • 3W audio Speaker • Audio player support • Sound level detection
Smart Card Support and Compliance	<ul style="list-style-type: none"> • ISO/IEC 14443 Type A and B • 2-4 SAM ISO7816 sockets for ID000 Format (SIM-Card) • support for MIFARE classic, MIFARE DESFire, MIFARE™ Plus, Calypso • EMVCo Level 1 and EMVCo Level 2 certification for EMV payments (PayPass and PayWave)
Optical Validation	<ul style="list-style-type: none"> • 1D and 2D barcode reader (for paper or mobile barcode tickets)
Communication Interfaces	<ul style="list-style-type: none"> • LAN Ethernet 10/100 Mbit • RS485 RS, IBIS (optional) • USB diagnostic port usable for maintenance • 2 digital I/O (Optional) • WiFi/Bluetooth (Optional) • 4G/GPS (Optional)
Environment	<ul style="list-style-type: none"> • Operating temperature: -20°C to +65°C • Storage Temperature: -30°C to +80°C • Humidity: 15% to 95% non-condensing
Power Supply	<ul style="list-style-type: none"> • 9 to 36 V DC - polarity inversion protection • Power consumption: max 8W
Housing	<ul style="list-style-type: none"> • Robust non-flammable material for automotive equipment • Protection Index IP54/IK08 (optional IK10) • Dimensions: Height 310mm, Width 156mm, Depth 80mm • Weight approximately 1,6Kg
Mounting	<ul style="list-style-type: none"> • The validator is mounted on a base, the standard base is adopted for mounting on vertical bus hand railings with diameters f50m 30 to 35 mm, as an option a base for horizontal hand railings is also available. • Time to mount or dismount approx. 20sec.